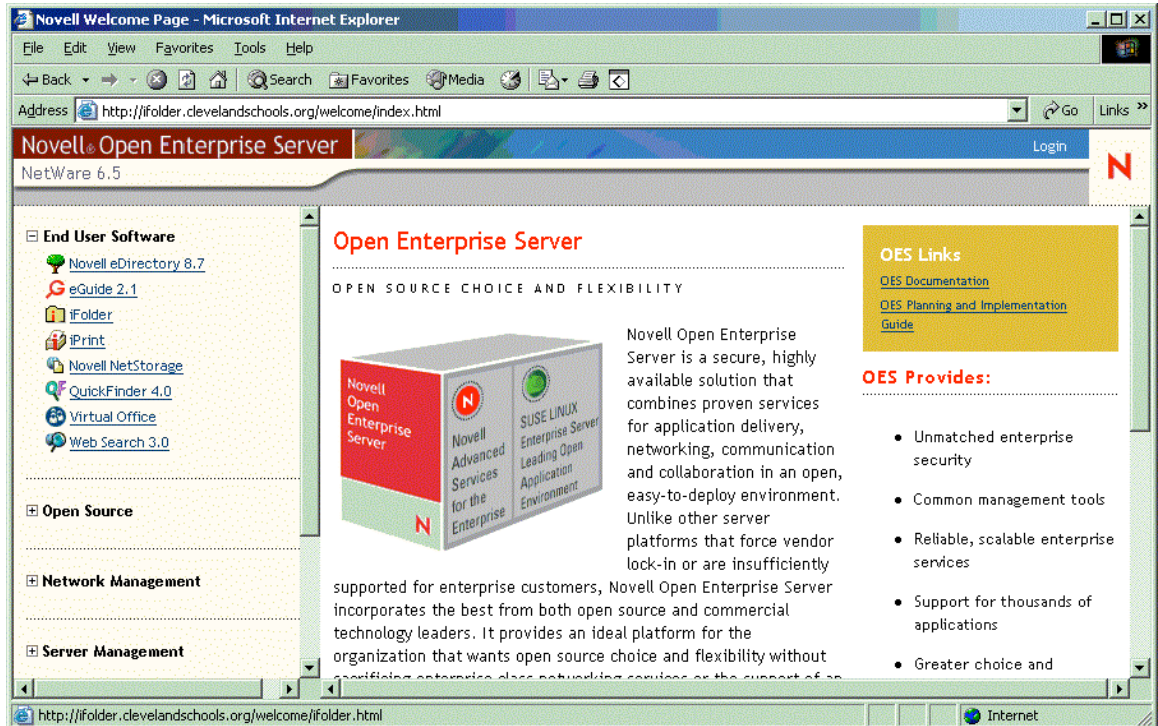
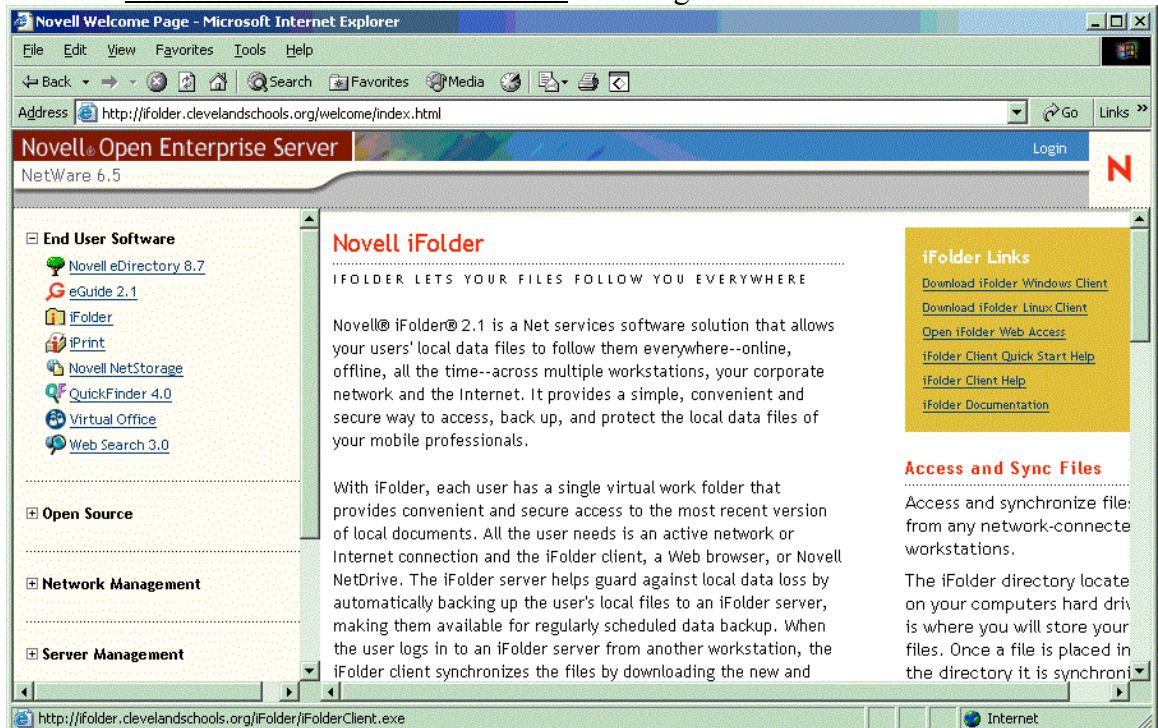


iFolder Install

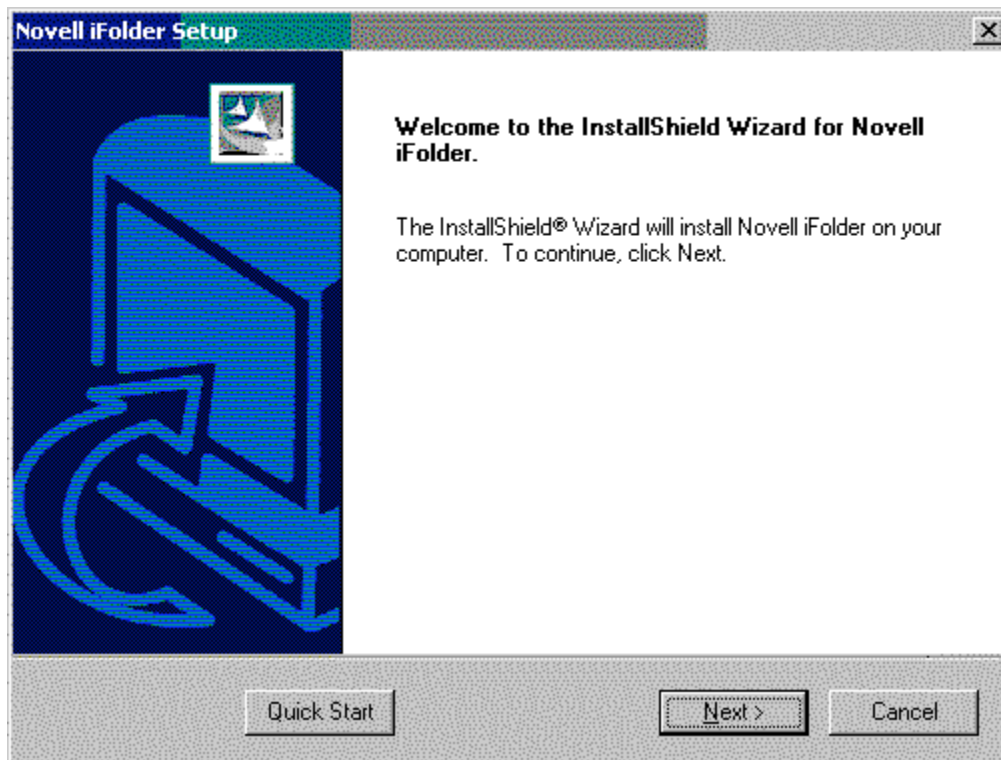
1. Open Internet Explorer(any web browser) and type ifolder.clevelandschools.org in the address bar



2. Click on iFolder in the left-hand frame
3. Click on Download iFolder Windows Client on the right hand-side



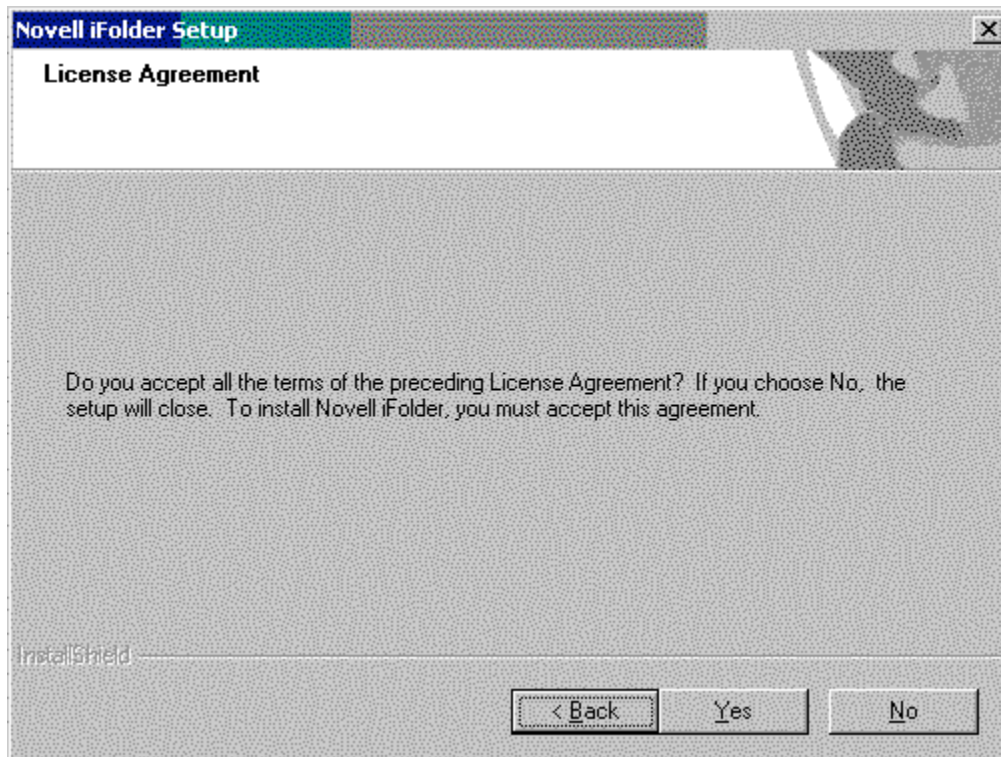
4. Save the file iFolderClient.exe to your desktop
5. Once the file has downloaded, double click on iFolderClient.exe
6. Click Next



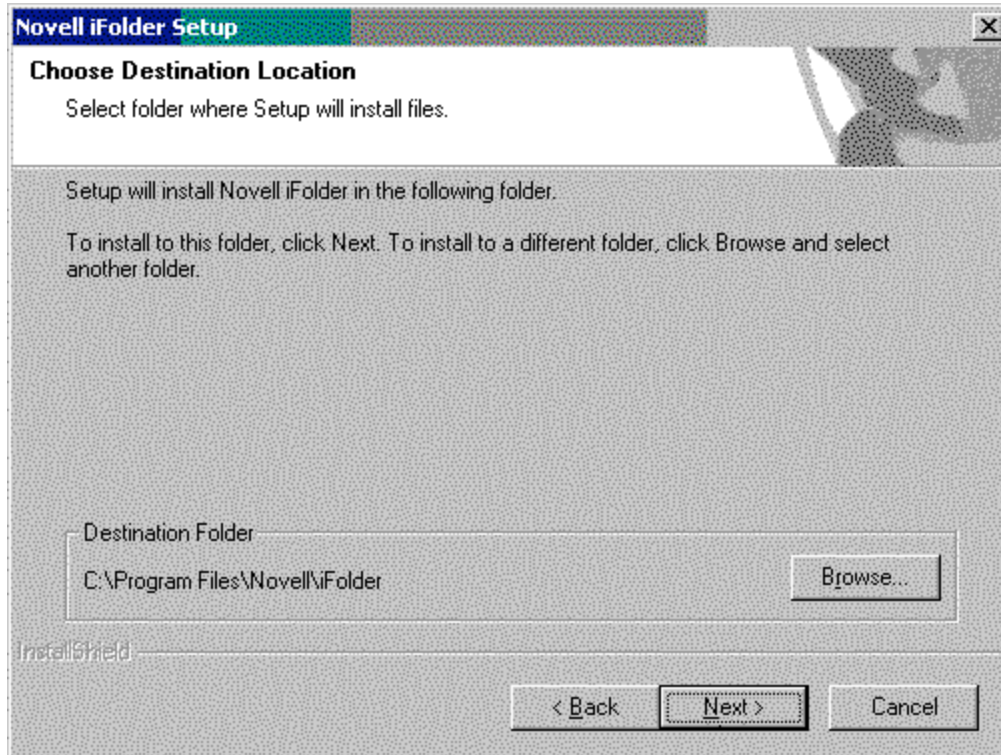
7. Click Next



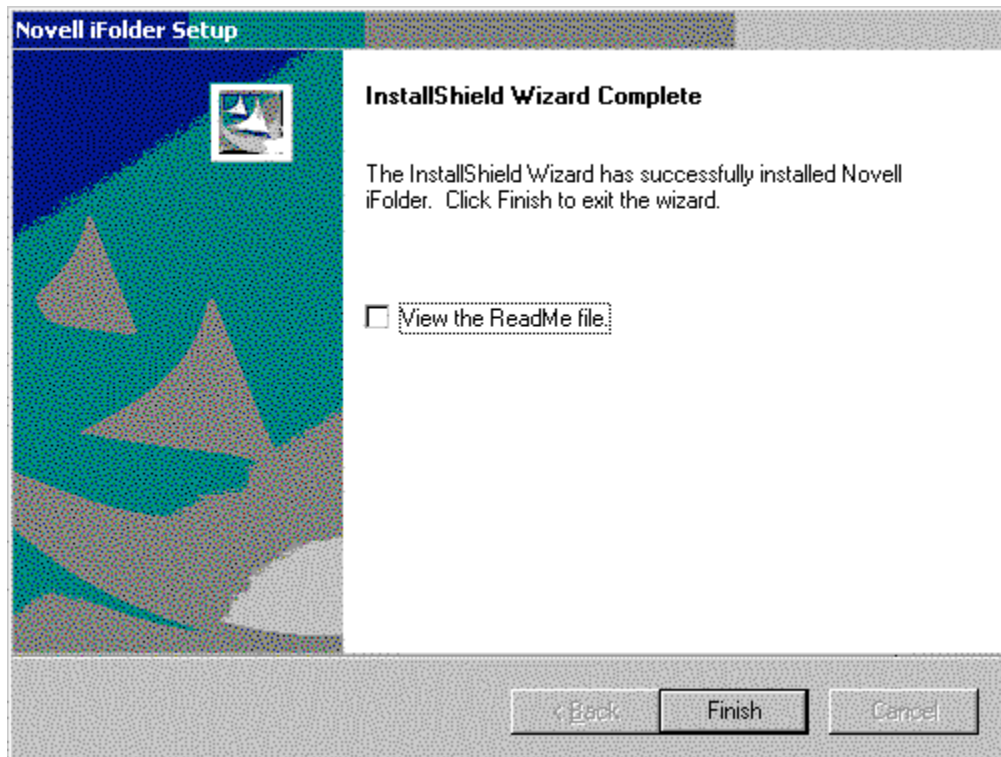
8. Click Yes



9. Click Next

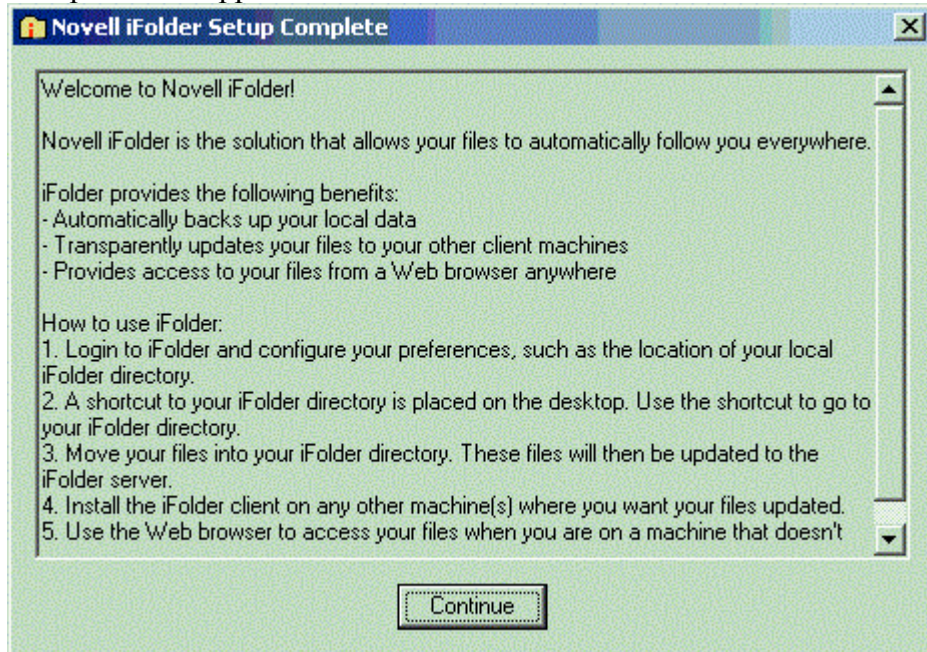


10. Uncheck View the ReadMe file and click Finish



11. Click Finish to Reboot your computer

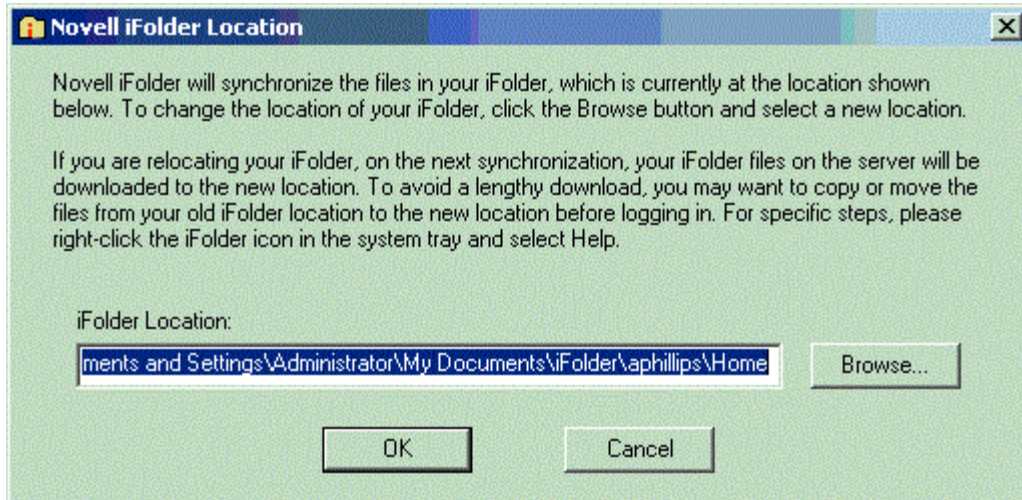
12. After the restart, if necessary login to your computer, Click Continue when the iFolder Setup window appears



13. Now type in your username and password (it should match the username and password you use to login to your computer at school)



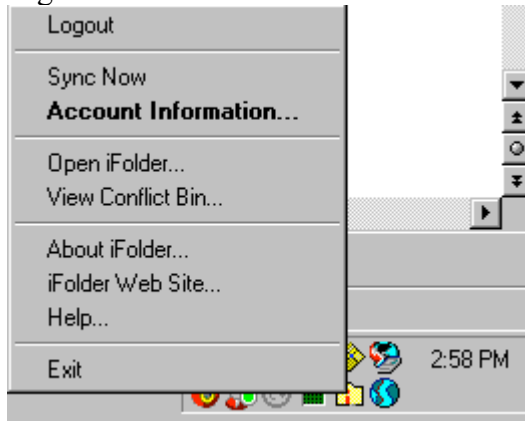
14. We don't need to change the folder location so click OK



15. Enter a PassPhrase (it can be the same as your password) and check the box that says remember PassPhrase
16. Now iFolder should start copying your files. This may take more than an hour.
17. Once your files have been copied you will notice a manila folder with an I in it. This is located in the bottom right-hand corner of your screen.



18. Right click on the manila folder and select Account Information



19. Under the Preferences tab make sure that Remember password and Remember pass phrase are checked. Click Apply and you are done.

